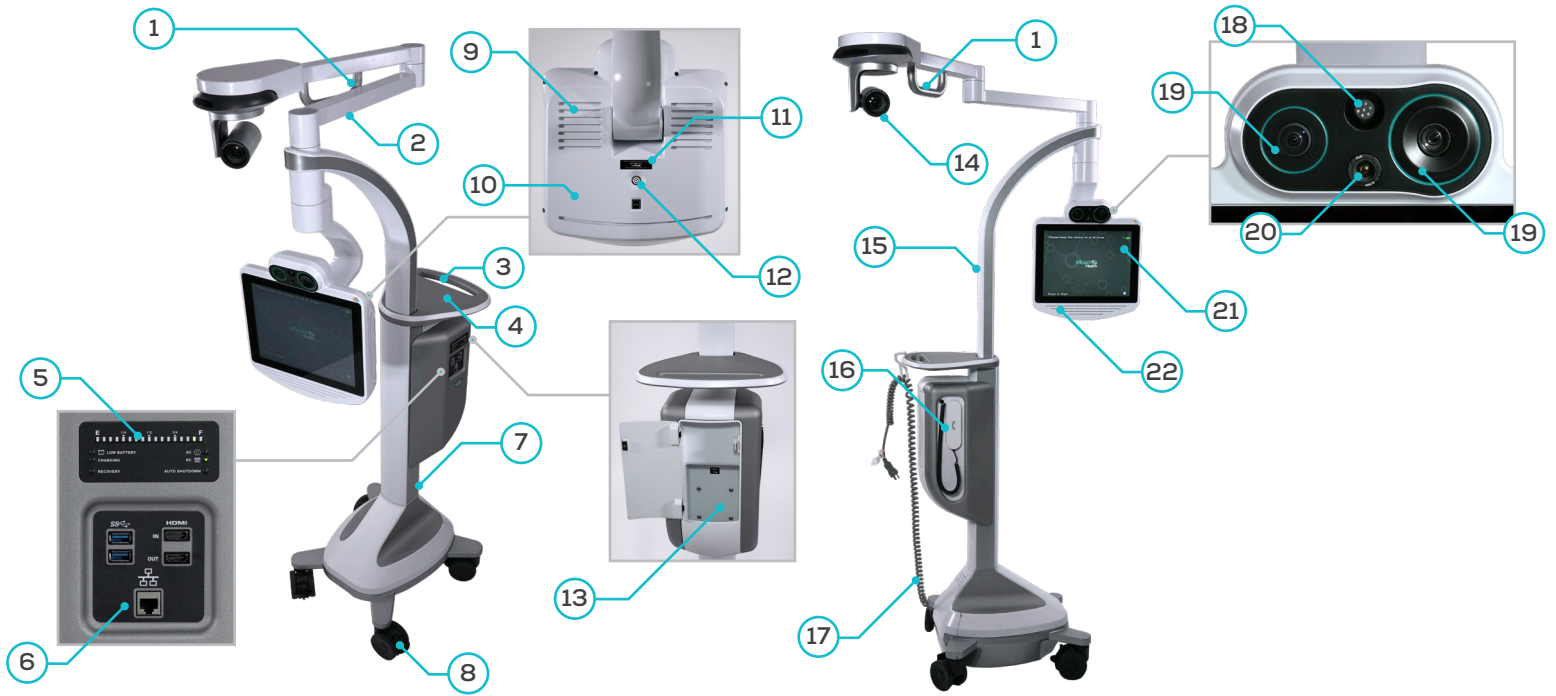


InTouch Lite 4™ with Boom Camera Quick Reference Guide



1	Boom Handle	Used to adjust the Boom arm.
2	Boom	Adjust Boom Camera to extend above the patient.
3	Handle	Easily maneuver the InTouch Lite 4.
4	Tray	Work surface for a laptop or other items.
5	Battery Charging Status	Displays the power and charging status of the InTouch Lite 4.
6	Expansion Panel	Includes ports for approved USB peripheral devices, HDMI output, optional HDMI input, and Ethernet.
7	Device Nameplate	Nameplate detailing the device's serial number and regulatory information.
8	Wheel Locks	Locks each wheel in place when stationary (four wheels).
9	Air Vents	Air vents help maintain a safe operating temperature for the device. (Do not cover)
10	Back of Touch Display	Power button and additional USB ports.
11	Serial Number Plate	Contains the device's serial number and support contact phone number.
12	Power Button	Used to toggle the power for the InTouch Lite 4.
13	Storage Compartment	Holds miscellaneous items.
14	Boom Camera	Allows for an additional, unobstructed view of the patient from above. (Do not touch)
15	Neck	Can be raised from 54" to a height of 75" by way of lifting or lowering the display.
16	Privacy Handset	Used for conversations requiring privacy or intelligibility in loud environments.
17	Power Cord	Used to power the InTouch Lite 4 and recharge the battery.
18	Directional Microphone	Used to pick up audio in a narrow zone.
19	Dual High-Definition Cameras	Captures remote video for viewing on the Provider Access Software.
20	Future Accessories	Reserved for optional future accessories.
21	Touch Sensitive Display	Enables local controls and shows Provider Access Software user's face.
22	Speakers	Used during sessions to hear the person connected to the device.

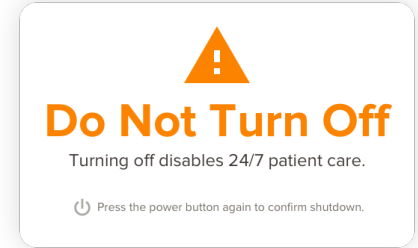
Powering on the InTouch Lite 4

1. Plug the Patient Access Device into a standard grounded AC outlet and allow the system to charge for at least 6 hours to reach a full charge.
2. Power on the InTouch Lite 4 by pressing the power button located on the back of the head.



Powering off the InTouch Lite 4

1. Press the power button on back of the head.
2. Confirm the power off with InTouch Patient Access Software by pressing the power button a second time.
3. Unplug from wall.

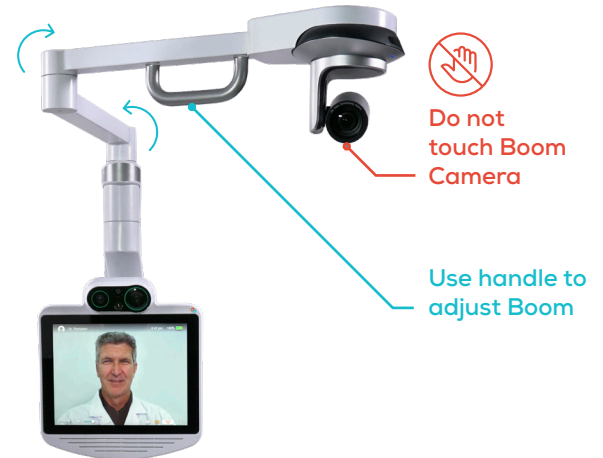


Adjusting the Height of the InTouch Lite 4

The InTouch Lite 4 head can be placed between 54” and 75” off the floor by raising or lowering the head to the desired height. Adjust the height with two hands on each sides of the display and gently raise or lower the display.



Adjusting the Boom

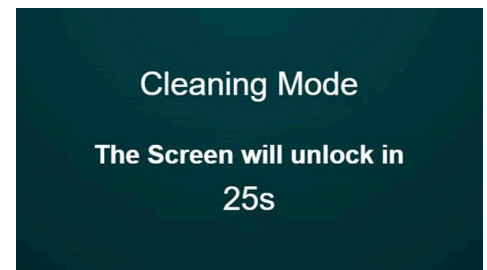
1. Lock the device’s wheels.
2. Set the Head to its lowest position.
3. Use the boom handle to rotate the Boom to the desired position. **Do not touch the Boom Camera.**







InTouch Lite 4 Screen Navigation

Cleaning the InTouch Lite 4

Tap Settings  > Cleaning Mode , to disable the screen for 30-seconds to allow cleaning. See the online user guide for details on cleaning the InTouch Lite 4, including tested cleaning chemicals.



Icon	Function
	Tap to preview any of the cameras connected to the device.
	Tap to open device settings.
	Tap to open the device’s User Guide.
	Tap to display information about the Lite 4.