

InTouch Lite 4™ Quick Reference Guide



1	Directional Microphone	Used to pick up audio in a narrow zone.
2	Dual High-Definition Cameras	Captures remote video for viewing on the Provider Access Software.
3	InTouch Thermal Camera (Optional)	Used to view heat patterns and variations.
4	Touch Sensitive Display	Enables local controls and shows Provider Access Software user's face.
5	Tray	Work surface for a laptop or other items.
6	Handle	Handle for moving the InTouch Lite 4.
7	Expansion Panel	Includes ports for approved USB peripheral devices, HDMI output, optional HDMI input, and Ethernet.
8	Power Cord	Used to power the InTouch Lite 4 and recharge the battery.
9	Wheel Locks	Locks each wheel in place when stationary (four wheels).
10	Storage Compartment	Holds miscellaneous items.
11	Power Meter	Displays the power and charging status of the InTouch Lite 4.
12	Privacy Handset	Used for conversations requiring privacy or intelligibility in loud environments.
13	Back of Touch Display	Location of the power button and additional USB ports.
14	Power Button	Used to toggle the power for the InTouch Lite 4.
15	Speakers	Used during sessions to hear the person connected to the device.
16	Device Nameplate	Nameplate detailing the device's serial number and regulatory information.
17	Neck	Can be raised from 54" to a height of 75" by way of lifting or lowering the display.
18	Serial Number Plate	Contains the device's serial number and support contact phone number.
19	Air Vents	Air vents help maintain a safe operating temperature for the device. (Do not cover)

InTouch Lite 4™ Quick Reference Guide

Powering on the InTouch Lite 4

1. Plug the Patient Access Device into a standard grounded AC outlet and allow the system to charge for at least 6 hours to reach a full charge.
2. Power on the InTouch Lite 4 by pressing the power button located on the back of the head.

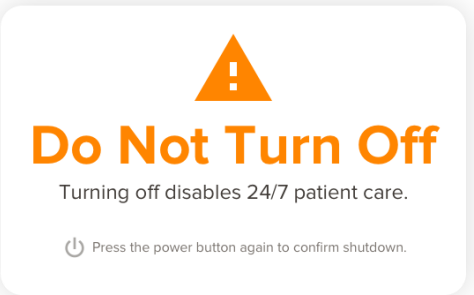






Powering off the InTouch Lite 4

1. Press power button on back of the head.
2. Confirm the power off with InTouch Patient Access Software by pressing power button a second time.
3. Unplug from wall.



Adjusting the Height of the InTouch Lite 4

The InTouch Lite 4 head can be placed between 54" and 75" off the floor by raising or lowering the head to the desired height. Adjust the height with two hands on each sides of the display and gently raise or lower the display.



Icon	Function
	Tap to preview any of the cameras connected to the device.
	Tap to open device settings.
	Tap to open the device's User Guide.
	Tap to display information about the Lite 4.

InTouch Lite 4 Screen Navigation Cleaning the InTouch Lite 4

Tap Settings  > Cleaning Mode , to disable the screen for 30-seconds to allow cleaning. See the online user guide for details on cleaning the InTouch Lite 4, including tested cleaning chemicals.

