

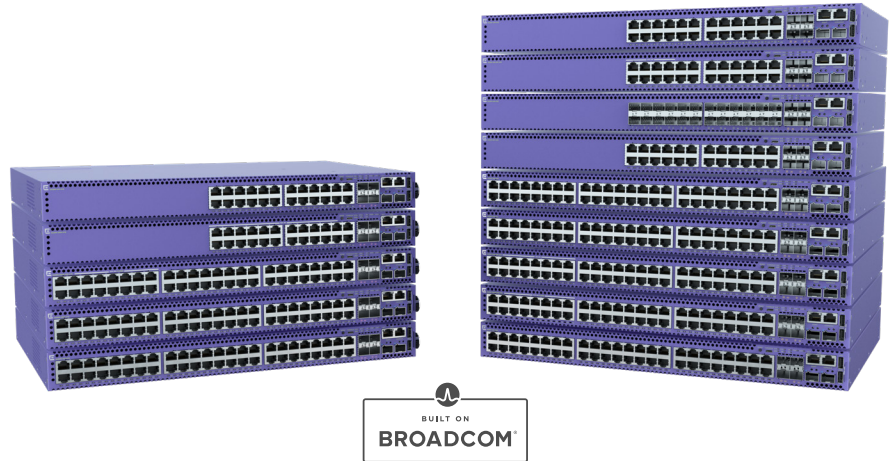
Highlights

- High-performance, feature-rich fixed-form switches for enterprise edge deployments
- Universal hardware platform providing end-to-end network segmentation and advanced policy with a choice of ExtremeSwitching operating systems
- Fixed 24 and 48-port models with Gigabit and Multi-Gigabit Ethernet connectivity
- 4 x 1/10Gb SFP+ or 4 x 1/10/25Gb built-in uplink ports
- 30W, 60W and 90W PoE support (IEEE 802.3at/IEEE 802.3bt)
- Up to 8-unit 40Gb per unit stacking
- MACsec on 10/100/1000 access and uplink ports for secure link encryption*
- Layer 2/Layer 3 Fabric services for secure network segmentation and automation
- Non-blocking, wire-speed design

Smart Management Choices

- ExtremeCloud™ IQ for powerful, simple and secure public or private cloud management
- 1-year ExtremeCloud IQ Pilot subscription included with each 5420
- ExtremeCloud IQ - Site Engine for centralized, unified management capabilities

* Supported in a future release



ExtremeSwitching™ 5420 Series

Universal Edge Switch Platform

The ExtremeSwitching 5420 Series are high-performance, feature-rich edge switches designed for the next-generation digital enterprise. The 5420 Series universal hardware design provides end-to-end secure network segmentation, in addition to advanced policy capabilities, and offers a user-selectable choice of Extreme's flagship switch operating systems. This makes the 5420 a uniquely flexible platform that can be deployed across a range of edge and wiring-closet environments.

The 5420 Series consists of 14 models split across 5420M and 5420F families to address a variety of end-user needs and price points. 5420M models include field-replaceable power supplies and fans, and 4 x 1/10/25Gb built-in uplink ports. 5420F models have a fixed power supply and fixed fan(s), a second field-replaceable power supply, and 4 x 1/10Gb built-in uplink ports.

Both 5420M and 5420F families include 24 and 48-port 1 Gigabit models, as well as 1/2.5 Gigabit multi-rate models. Both also provide 30/60/90W PoE capabilities making them an ideal wired backend for wireless APs or in support of next gen power Ethernet devices, such as digital signage, pan-tilt-zoom cameras, smart lighting, or point-of-sale terminals.



Universal Hardware Platform

The 5420 Series as a universal hardware platform comes with a dual-persona capability allowing user choice of the switch operating system (OS). Either the ExtremeXOS® or VSP Operating System (VOSS) persona can be enabled on 5420 hardware models. The desired persona can be selected at start-up or changed at a later stage. Once selected, the 5420 assumes the features/capabilities of the selected OS.

5420 persona activation can be done manually at boot-up, including via the system CLI. Or, it can be automated by pre-provisioning the 5420 persona in ExtremeCloud IQ. When first booted, the 5420 automatically connects to ExtremeCloud IQ to find its persona. The pre-provisioned OS persona is then remotely enabled on the 5420 system - eliminating the need for manual selection.



Ethernet Fabric Services

The 5420 supports a variety of Ethernet Fabric services, including Extreme's Fabric Connect when running VOSS and Extreme's IP Fabric when running ExtremeXOS. It also supports Fabric Attach for automated connection to either Layer 2 or Layer 3 fabric services. Extreme's Fabric Connect and IP Fabric on the 5420 enable the creation of virtualized networks that automate network operations, simplify network provisioning and enhance security, all while reducing the strain on network and IT personnel.



Power over Ethernet (PoE)

The 5420 Series includes Power over Ethernet models supporting standards-based IEEE 802.3bt (30/60/90W) PoE capabilities. This enables the 5420 to address the needs of powered edge devices, while eliminating the need for additional electrical cabling and circuits. In addition, 5420 PoE models also support perpetual and fast PoE for even more efficient and reliable powered edge device operation.



MACsec Link Encryption

IEEE 802.1AE MACsec* is supported on the 5420 access ports, as well as on its built-in uplink ports. MACsec is a hop-by-hop security capability which encrypts/decrypts packets between connected switches or devices. As a link-only encryption, the switches can still apply services to the packet, such as policy or QoS, without compromising the security of packets across the link. With 128-bit and 256-bit Advanced Encryption Standard (AES) support, the 5420 provides the most secure link encryption.

* Supported in a future release



High-Performance Stacking

The 5420 series also supports high-speed stacking when running ExtremeXOS via its two built-in SFP-DD stacking ports. Up to eight systems can be stacked using qualified SFP+/SFP-DD direct attach cables and optical transceivers.



Management

The 5420 can be managed by ExtremeCloud™ IQ or ExtremeCloud IQ - Site Engine for comprehensive unified management with a consolidated view of users, devices and applications across wired and wireless networks. (NOTE: Each 5420 unit also includes a 1-year ExtremeCloudIQ Pilot subscription.)

Zero-touch provisioning from ExtremeCloud IQ lets one quickly bring new 5420 switches online as well as enable the selection of the operating system (OS) persona. Alternatively, 5420 on-box management can be done manually via a web-based GUI or generic CLI.

External Interfaces

| Switch Model | Interfaces |
|---------------|---|
| 5420F-24T-4XE | 24 x 10/100/1000Base-T ports <ul style="list-style-type: none"> • Full/Half-Duplex (autosensing) • MACsec-capable 4 x 1/10Gb SFP+ uplink ports (unpopulated) <ul style="list-style-type: none"> • MACsec-capable 2 x Stacking/SFP-DD ports* (unpopulated) 1 x Serial console port (RJ-45) 1 x 10/100/1000BASE-T out-of-band management port 2 x USB A ports for management or external USB flash 1 x USB Micro-B console port |
| 5420F-24P-4XE | 24 x 10/100/1000Base-T 802.3at (30W) ports <ul style="list-style-type: none"> • Full/Half-Duplex (autosensing) • MACsec-capable 4 x 1/10Gb SFP+ uplink ports (unpopulated) <ul style="list-style-type: none"> • MACsec-capable 2 x Stacking/SFP-DD ports* (unpopulated) 1 x Serial console port (RJ-45) 1 x 10/100/1000BASE-T out-of-band management port 2 x USB A ports for management or external USB flash 1 x USB Micro-B console port |
| 5420F-24S-4XE | 24 x 100/1000Base-X (SFP) ports (unpopulated) <ul style="list-style-type: none"> • MACsec-capable 4 x 1/10Gb SFP+ uplink ports (unpopulated) <ul style="list-style-type: none"> • MACsec-capable 2 x Stacking/SFP-DD ports* (unpopulated) 1 x Serial console port (RJ-45) 1 x 10/100/1000BASE-T out-of-band management port 2 x USB A ports for management or external USB flash 1 x USB Micro-B console port |
| 5420F-48T-4XE | 48 x 10/100/1000Base-T ports <ul style="list-style-type: none"> • Full/Half-Duplex (autosensing) • MACsec-capable 4 x 1/10Gb SFP+ uplink ports (unpopulated) <ul style="list-style-type: none"> • MACsec-capable 2 x Stacking/SFP-DD ports* (unpopulated) 1 x Serial console port (RJ-45) 1 x 10/100/1000BASE-T out-of-band management port 2 x USB A ports for management or external USB flash 1 x USB Micro-B console port |
| 5420F-48P-4XE | 48 x 10/100/1000Base-T 802.3at (30W) ports <ul style="list-style-type: none"> • Full/Half-Duplex (autosensing) • MACsec-capable 4 x 1/10Gb SFP+ uplink ports (unpopulated) <ul style="list-style-type: none"> • MACsec-capable 2 x Stacking/SFP-DD ports* (unpopulated) 1 x Serial console port (RJ-45) 1 x 10/100/1000BASE-T out-of-band management port 2 x USB A ports for management or external USB flash 1 x USB Micro-B console port |
| 5420F-48P-4XL | 48 x 10/100/1000Base-T 802.3at (30W) ports <ul style="list-style-type: none"> • Full/Half-Duplex (autosensing) • MACsec-capable 4 x 1/10Gb SFP+ uplink ports (unpopulated) <ul style="list-style-type: none"> • MACsec-capable • LRM-capable 2 x Stacking/SFP-DD ports* (unpopulated) 1 x Serial console port (RJ-45) 1 x 10/100/1000BASE-T out-of-band management port 2 x USB A ports for management or external USB flash 1 x USB Micro-B console port |

External Interfaces (cont.)

| Switch Model | Interfaces |
|--------------------|--|
| 5420F-8W-16P-4XE | <p>8 x 10/100/1000Base-T 802.3bt (90W) ports</p> <ul style="list-style-type: none"> • Full/Half-Duplex (autosensing) • MACsec-capable <p>16 x 10/100/1000Base-T 802.3at (30W) ports</p> <ul style="list-style-type: none"> • Full/Half-Duplex (autosensing) • MACsec-capable <p>4 x 1/10Gb SFP+ uplink ports (unpopulated)</p> <ul style="list-style-type: none"> • MACsec-capable <p>2 x Stacking/SFP-DD ports* (unpopulated)</p> <p>1 x Serial console port (RJ-45)</p> <p>1 x 10/100/1000BASE-T out-of-band management port</p> <p>2 x USB A ports for management or external USB flash</p> <p>1 x USB Micro-B console port</p> |
| 5420F-16W-32P-4XE | <p>16 x 10/100/1000Base-T 802.3bt (90W) ports</p> <ul style="list-style-type: none"> • Full/Half-Duplex (autosensing) • MACsec-capable <p>32 x 10/100/1000Base-T 802.3at (30W) ports</p> <ul style="list-style-type: none"> • Full/Half-Duplex (autosensing) • MACsec-capable <p>4 x 1/10Gb SFP+ uplink ports (unpopulated)</p> <ul style="list-style-type: none"> • MACsec-capable <p>2 x Stacking/SFP-DD ports* (unpopulated)</p> <p>1 x Serial console port (RJ-45)</p> <p>1 x 10/100/1000BASE-T out-of-band management port</p> <p>2 x USB A ports for management or external USB flash</p> <p>1 x USB Micro-B console port</p> |
| 5420F-16MW-32P-4XE | <p>16 x 100M/1G/2.5GBase-T 802.3bt (90W) ports</p> <ul style="list-style-type: none"> • MACsec-capable <p>32 x 10/100/1000Base-T 802.3at (30W) ports</p> <ul style="list-style-type: none"> • Full/Half-Duplex (autosensing) • MACsec-capable <p>4 x 1/10Gb SFP+ uplink ports (unpopulated)</p> <ul style="list-style-type: none"> • MACsec-capable <p>2 x Stacking/SFP-DD ports* (unpopulated)</p> <p>1 x Serial console port (RJ-45)</p> <p>1 x 10/100/1000BASE-T out-of-band management port</p> <p>2 x USB A ports for management or external USB flash</p> <p>1 x USB Micro-B console port</p> |
| 5420M-24T-4YE | <p>24 x 10/100/1000Base-T ports</p> <ul style="list-style-type: none"> • Full/Half-Duplex (autosensing) • MACsec-capable <p>4 x 1/10/25Gb SFP28 uplink ports (unpopulated)</p> <ul style="list-style-type: none"> • MACsec-capable <p>2 x Stacking/SFP-DD ports* (unpopulated)</p> <p>1 x Serial console port (RJ-45)</p> <p>1 x 10/100/1000BASE-T out-of-band management port</p> <p>2 x USB A ports for management or external USB flash</p> <p>1 x USB Micro-B console port</p> |
| 5420M-24W-4YE | <p>24 x 10/100/1000Base-T 802.3bt (90W) ports</p> <ul style="list-style-type: none"> • Full/Half-Duplex (autosensing) • MACsec-capable <p>4 x 1/10/25Gb SFP28 uplink ports (unpopulated)</p> <ul style="list-style-type: none"> • MACsec-capable <p>2 x Stacking/SFP-DD ports* (unpopulated)</p> <p>1 x Serial console port (RJ-45)</p> <p>1 x 10/100/1000BASE-T out-of-band management port</p> <p>2 x USB A ports for management or external USB flash</p> <p>1 x USB Micro-B console port</p> |

External Interfaces (cont.)

| Switch Model | Interfaces |
|--------------------|---|
| 5420M-48T-4YE | 48 x 10/100/1000Base-T ports <ul style="list-style-type: none"> • Full/Half-Duplex (autosensing) • MACsec-capable 4 x 1/10/25Gb SFP28 uplink ports (unpopulated) <ul style="list-style-type: none"> • MACsec-capable 2 x Stacking/SFP-DD ports* (unpopulated) 1 x Serial console port (RJ-45) 1 x 10/100/1000BASE-T out-of-band management port 2 x USB A ports for management or external USB flash 1 x USB Micro-B console port |
| 5420M-48W-4YE | 48 x 10/100/1000Base-T 802.3bt (90W) ports <ul style="list-style-type: none"> • Full/Half-Duplex (autosensing) • MACsec-capable 4 x 1/10/25Gb SFP28 uplink ports (unpopulated) <ul style="list-style-type: none"> • MACsec-capable 2 x Stacking/SFP-DD ports* (unpopulated) 1 x Serial console port (RJ-45) 1 x 10/100/1000BASE-T out-of-band management port 2 x USB A ports for management or external USB flash 1 x USB Micro-B console port |
| 5420M-16MW-32P-4YE | 16 x 100M/1G/2.5GBase-T 802.3bt (90W) ports <ul style="list-style-type: none"> • MACsec-capable 32 x 10/100/1000Base-T 802.3at (30W) ports <ul style="list-style-type: none"> • Full/Half-Duplex (autosensing) • MACsec-capable 4 x 1/10/25Gb SFP28 uplink ports (unpopulated) <ul style="list-style-type: none"> • MACsec-capable 2 x Stacking/SFP-DD ports* (unpopulated) 1 x Serial console port (RJ-45) 1 x 10/100/1000BASE-T out-of-band management port 2 x USB A ports for management or external USB flash 1 x USB Micro-B console port |

* The 2x Stacking/SFP-DD ports can be used either for stacking (with EXOS) or as Ethernet front panel ports (with EXOS or with VOSS in non-Fabric mode). SFP-DD ports can support either 10Gb or 20Gb data rates using appropriate transceiver/cables. When used for Ethernet, 5420M models support 2 x 10Gb channels on each SFP-DD port; whereas 5420F models only support 1 x 10Gb channel on each port.

5420F Performance and Scale

| Switch Model | Max Active 10/100/1000Mb Ports | Max Active 100Mb/1Gb/2.5Gb Ports | Max Active 100Mb/1Gb SFP ports | Max Active 1/10Gb SFP+ Ports | Max Active 1/10/25Gb SFP28 Ports | Max Active 20Gb Stacking Ports*** | Aggregated Switch Bandwidth | Frame Forwarding Rate |
|--------------------|--------------------------------|----------------------------------|--------------------------------|------------------------------|----------------------------------|-----------------------------------|-----------------------------|-----------------------|
| 5420F-24T-4XE | 24 | 0 | 0 | 6* | 0 | 2 | 208 Gbps | 154.8 mpps |
| 5420F-24P-4XE | 24 | 0 | 0 | 6* | 0 | 2 | 208 Gbps | 154.8 mpps |
| 5420F-24S-4XE | 0 | 0 | 24 | 6* | 0 | 2 | 208 Gbps | 154.8 mpps |
| 5420F-48T-4XE | 48 | 0 | 0 | 6* | 0 | 2 | 256 Gbps | 190.5 mpps |
| 5420F-48P-4XE | 48 | 0 | 0 | 6* | 0 | 2 | 256 Gbps | 190.5 mpps |
| 5420F-48P-4XL | 48 | 0 | 0 | 6* | 0 | 2 | 256 Gbps | 190.5 mpps |
| 5420F-8W-16P-4XE | 24 | 0 | 0 | 6* | 0 | 2 | 208 Gbps | 154.8 mpps |
| 5420F-16W-32P-4XE | 48 | 0 | 0 | 6* | 0 | 2 | 256 Gbps | 190.5 mpps |
| 5420F-16MW-32P-4XE | 32 | 16 | 0 | 6* | 0 | 2 | 304 Gbps | 226.2 mpps |

5420M Performance and Scale

| Switch Model | Max Active 10/100/1000Mb Ports | Max Active 100Mb/1Gb/2.5Gb Ports | Max Active 100Mb/1Gb SFP ports | Max Active 1/10Gb SFP+ Ports | Max Active 1/10/25Gb SFP28 Ports | Max Active 20Gb Stacking Ports*** | Aggregated Switch Bandwidth | Frame Forwarding Rate |
|--------------------|--------------------------------|----------------------------------|--------------------------------|------------------------------|----------------------------------|-----------------------------------|-----------------------------|-----------------------|
| 5420M-24T-4YE | 24 | 0 | 0 | 4** | 4 | 2 | 328 Gbps | 244.0 mpps |
| 5420M-24W-4YE | 24 | 0 | 0 | 4** | 4 | 2 | 328 Gbps | 244.0 mpps |
| 5420M-48T-4YE | 48 | 0 | 0 | 4** | 4 | 2 | 376 Gbps | 279.7 mpps |
| 5420M-48W-4YE | 48 | 0 | 0 | 4** | 4 | 2 | 376 Gbps | 279.7 mpps |
| 5420M-16MW-32P-4YE | 32 | 16 | 0 | 4** | 4 | 2 | 424 Gbps | 315.5 mpps |

* Includes 2 ports available using the 2 x Stacking/SFP-DD ports when these ports are not used for stacking with EXOS, or when in non-Fabric mode with VOSS

** 4 ports available through channelization of the 2 x Stacking/SFP-DD ports when these ports are not used for stacking with EXOS, or when in non-Fabric mode with VOSS

*** EXOS only: 20Gb stacking requires SFP-DD transceivers/cables available with a future software release; 10Gb stacking supported using SFP+ transceivers/cables

5420 Software Scaling Values

5420F Series with ExtremeXOS

- MAC Table: 32,000
- IPv4 ARP Table: 16,000
- IPv4 Route Table: 12,000
- IP Multicast Entries (S,G,V): 6,000
- IPv6 Route Table: 6,000
- IPv6 Neighbor Table 6,000
- ACL (Ingress/Egress): 8,000/1,024
- VLANs: 4,094
- IP Interfaces (aka Routed VLANs): 1,533

One Policy Scaling

- Policy Profiles: 63
- Unique Permit/deny rules per switch: 4,024

5420M Series with ExtremeXOS

- MAC Table: 64,000
- IPv4 ARP Table: 24,000
- IPv4 Route Table: 12,000
- IP Multicast Entries (S,G,V): 12,000
- IPv6 Route Table: 6,000
- IPv6 Neighbor Table 12,000
- ACL (Ingress/Egress): 18,000/1,024
- VLANs: 4,094
- IP Interfaces (aka Routed VLANs): 1,533

One Policy Scaling

- Policy Profiles: 63
- Unique Permit/deny rules per switch: 8,120

5420F Series with VOSS

- MAC Table: 16,000 (32,000 non-Fabric)
- IPv4 ARP Table: 8,000
- IPv4 Route Table: 11,750
- IP Multicast Entries (S,G,V): 4,000
- IPv6 Route Table: 5,750
- IPv6 Neighbor Table 8,000
- ACL (Ingress/Egress): 1,024/336
- VLANs: 4,059
- IP Interfaces (aka Routed VLANs): 248

Fabric Connect Scaling

- Fabric Adjacencies per switch: 50
- Fabric nodes per area (BEB + BCB): 800
- BEB Nodes per VSN (I-SID): 500
- L2 VSNs: 512
- L3 VSNs: 64

5420M Series with VOSS

- MAC Table: 32,000 (64,000 non-Fabric)
- IPv4 ARP Table: 24,000
- IPv4 Route Table: 11,750
- IP Multicast Entries (S,G,V): 4,000
- IPv6 Route Table: 5,750
- IPv6 Neighbor Table 16,000
- ACL (Ingress/Egress): 1,024/336
- VLANs: 4,059
- IP Interfaces (aka Routed VLANs): 248

Fabric Connect Scaling

- Fabric Adjacencies per switch: 50
- Fabric nodes per area (BEB + BCB): 800
- BEB Nodes per VSN (I-SID): 500
- L2 VSNs: 512
- L3 VSNs: 64

Weights and Dimensions

| Switch Model | Weight* | Physical Dimensions |
|--------------------|------------------|---|
| 5420 Systems | | |
| 5420F-24T-4XE | 9.03 lb/4.10 kg | 17.4 in W/1.7 in H/11.3 in D 441 mm x 44 mm x 287 mm |
| 5420F-24P-4XE | 10.23 lb/4.64 kg | |
| 5420F-24S-4XE | 9.08 lb/4.12 kg | |
| 5420F-8W-16P-4XE | 10.23 lb/4.64 kg | |
| 5420F-48T-4XE | 10.23 lb/4.64 kg | |
| 5420F-48P-4XE | 11.64 lb/5.28 kg | 17.4 in W/1.7 in H/13.0 in D 441 mm x 44 mm x 330 mm |
| 5420F-48P-4XL | 11.64 lb/5.28 kg | |
| 5420F-16W-32P-4XE | 11.82 lb/5.36 kg | |
| 5420F-16MW-32P-4XE | 11.68 lb/5.30 kg | |
| 5420M-24T-4YE | 9.22 lb/4.18 kg | |
| 5420M-24W-4YE | 9.70 lb/4.40 kg | |
| 5420M-48T-4YE | 9.68 lb/4.39 kg | |
| 5420M-48W-4YE | 10.43 lb/4.73 kg | |
| 5420M-16MW-32P-4YE | 11.68 lb/5.30 kg | |

* Measured weight includes fan (XN-FAN-000) and PSU cover(s), but does not include optional power supply unit(s).

Optional Power Supply Unit Specifications

| | XN-ACPWR-150W | XN-ACPWR-600W | XN-ACPWR-920W | XN-ACPWR-1200W* | XN-ACPWR-2000W** |
|-------------------------------|-----------------------------------|-----------------------------------|-----------------------------------|-----------------------------------|---------------------|
| Voltage Input Range (Nominal) | 100-127/200-240 VAC | 100-127/200-240 VAC | 100-127/200-240 VAC | 100-127/200-240 VAC | 100-127/200-240 VAC |
| Line Frequency Range | 47 to 63 Hz | 47 to 63 Hz | 47 to 63 Hz | 47 to 63 Hz | 47 to 63 Hz |
| Power Supply Input Socket | IEC/EN 60320 C14 | IEC/EN 60320 C16 | IEC/EN 60320 C16 | IEC/EN 60320 C16 | IEC/EN 60320 C16 |
| Power Cord Input Plug | IEC/EN 60320 C15 | IEC/EN 60320 C15 | IEC/EN 60320 C15 | IEC/EN 60320 C15 | IEC/EN 60320 C15 |
| Operating Temperature | 0° C to 50° C Normal Operation | 0° C to 50° C Normal Operation | 0° C to 50° C Normal Operation | 0° C to 50° C Normal Operation | 0° C to 45° C*** |

* 200-240 VAC is required to achieve full 1200W output. If run at 100-120 VAC, output is limited to 860W

** 200-240 VAC is required to achieve full 2000W output. If run at 100-120 VAC, output is limited to 1100W

*** At sea-level, 0° C to 40° C at 1500m; 0° C to 35° C at 3000m

5420F Internal Fixed and Secondary Power Supply Options

| Model | Internal Fixed Power Supply Unit (PSU)* | Secondary Power Supply Unit (PSU)** |
|--------------------|---|-------------------------------------|
| 5420F-24T-4XE | 120W AC PSU | XN-ACPWR-150W |
| 5420F-24P-4XE | 660W AC PSU | XN-ACPWR-600W |
| 5420F-24S-4XE | 150W AC PSU | XN-ACPWR-150W |
| 5420F-48T-4XE | 120W AC PSU | XN-ACPWR-150W |
| 5420F-48P-4XE | 860W AC PSU | XN-ACPWR-920W |
| 5420F-48P-4XL | 860W AC PSU | XN-ACPWR-920W |
| 5420F-8W-16P-4XE | 660W AC PSU | XN-ACPWR-600W |
| 5420F-16W-32P-4XE | 1200W AC PSU | XN-ACPWR-1200W |
| 5420F-16MW-32P-4XE | 1200W AC PSU | XN-ACPWR-1200W |

* Internal Fixed PSU is non-orderable and comes pre-installed with each 5420F model.

** Secondary PSU provides power redundancy in 5420F non-PoE models and enables maximum PoE Power Budget in 5420F PoE models (see table below). Model/PSU combinations other than those listed above are blocked physically or in software.

5420F PoE Power Budget

| Model | PoE Budget with Single Internal Fixed PSU | PoE Budget with Recommended Secondary PSU |
|--------------------|---|---|
| 5420F-24P-4XE | 380W | 720W |
| 5420F-48P-4XE | 740W | 1480W |
| 5420F-48P-4XL | 740W | 1480W |
| 5420F-8W-16P-4XE | 480W | 960W |
| 5420F-16W-32P-4XE | 872W*/960W** | 1437W*/1874W** |
| 5420F-16MW-32P-4XE | 860W*/960W** | 1425W*/1862W** |

* @ 100-120 VAC

** @ 200-240 VAC

5420M Primary and Secondary Power Supply Options

| Model | Primary Power Supply Unit (PSU)* | Secondary Power Supply Unit (PSU)* |
|--------------------|------------------------------------|------------------------------------|
| 5420M-24T-4YE | XN-ACPWR-150W | XN-ACPWR-150W |
| 5420M-24W-4YE | XN-ACPWR-920W | XN-ACPWR-920W |
| 5420M-48T-4YE | XN-ACPWR-150W | XN-ACPWR-150W |
| 5420M-48W-4YE | XN-ACPWR-920W or XN-ACPWR-2000W | XN-ACPWR-920W or XN-ACPWR-2000W |
| 5420M-16MW-32P-4YE | XN-ACPWR-920W or XN-ACPWR-2000W | XN-ACPWR-920W or XN-ACPWR-2000W |

* Primary PSU is required; Secondary PSU provides power redundancy and enables maximum PoE Budget in 5420M PoE models (see table below). Model/PSU combinations other than those listed above are blocked physically or in software.

5420M PoE Power Budget

| Model | 1 x 920W | 2 x 920W | 1 x 2000W @ 100-120VAC | 1 x 2000W @ 200-240VAC | 1 x 920W & 1 x 2000W @ 100-120VAC | 1 x 920W & 1 x 2000W @ 200-240VAC | 2 x 2000W @ 100-120VAC | 2 x 2000W @ 200-240VAC |
|--------------------|----------|----------|---------------------------|---------------------------|---|---|---------------------------|---------------------------|
| 5420M-24W-4YE | 720W | 1440W | — | — | — | — | — | — |
| 5420M-48W-4YE | 804W | 1558W | 884W | 1440W | 1212W | 2076W | 1704W | 2880W |
| 5420M-16MW-32P-4YE | 787W | 1541W | 867W | 1440W | 1195W | 2059W | 1687W | 2400W |

Minimum/Maximum Power Consumption and Heat Dissipation

| Switch Model | Minimum Power Consumption (Watts) | Minimum Heat Dissipation (BTU/hr) | Maximum Power Consumption (Watts)* | Maximum Heat Dissipation (BTU/hr)** |
|-----------------------|-----------------------------------|-----------------------------------|------------------------------------|-------------------------------------|
| 5420F Switches | | | | |
| 5420F-24T-4XE | 24 | 81 | 62 | 211 |
| 5420F-24P-4XE | 37 | 127 | 833 | 387 |
| 5420F-24S-4XE | 35 | 119 | 114 | 388 |
| 5420F-48T-4XE | 31 | 106 | 75 | 255 |
| 5420F-48P-4XE | 48 | 164 | 1674 | 663 |
| 5420F-8W-16P-4XE | 37 | 127 | 1092 | 452 |
| 5420F-16W-32P-4XE | 46 | 156 | 2150 | 785 |
| 5420F-16MW-32P-4XE | 50 | 172 | 2152 | 790 |
| 5420M Switches | | | | |
| 5420M-24T-4YE | 28 | 95 | 57 | 194 |
| 5420M-24W-4YE | 43 | 148 | 1601 | 551 |
| 5420M-48T-4YE | 34 | 117 | 68 | 232 |
| 5420M-48W-4YE | 72 | 245 | 3090 | 716 |
| 5420M-16MW-32P-4YE | 69 | 234 | 2564 | 560 |

Ordering Notes

Customers ordering a 5420F Series switch receive the hardware switch along with Base software license, integrated power supply, fan modules and rack-mount kit. 5420M Series switch customers receive the same components, except for power supplies which are not included with the unit. In addition, each 5420 switch comes with a free 1-year ExtremeCloud IQ Pilot subscription.

At least one Power Supply Unit (PSU) is required for 5420M operation. Additional power supplies (either for 5420F or 5420M switches), transceiver/optics, power cords, as well as Premier and/or MACsec licenses must be ordered separately.

Base Software and Optional Premier License

The Base software included with each 5420 unit supports most available software features. Certain features, however, require a Premier License to operate:

For ExtremeXOS, a Premier License is required for:

- 5 or more OSPF and/or PIM SM interfaces
- PIM DM/PIM SSM
- Anycast RP (Rendezvous Point)
- MultiSource Discovery Protocol (MSDP)
- IS-IS/BGP4/MBGP
- GRE Tunneling
- Ethernet VPN (EVPN)

For VOSS, a Premier License is required for:

- 5 or more OSPF active interfaces
- 3 or more BGP Peers
- Layer 3 Virtual Service Networks (L3 VSNs)

Ordering Information

| Part Number | Product Name | Description |
|--------------------|--|---|
| 5420F-24T-4XE | 5420F 24-port Switch | 5420 Universal Switch with 24 x 10/100/1000BASE-T full/half duplex ports, includes 4 x 1/10Gb SFP+ uplink ports, 2 x Stacking/SFP-DD ports, 1 internal fixed PSU, one unpopulated PSU slot, fixed fan module, Base software license, includes 1-year XIQ Pilot subscription |
| 5420F-24P-4XE | 5420F 24-port 30W PoE Switch | 5420 Universal Switch with 24 x 10/100/1000BASE-T full/half duplex 802.3at 30W PoE ports, includes 4 x 1/10Gb SFP+ uplink ports, 2 x Stacking/SFP-DD ports, 1 internal fixed PSU, one unpopulated PSU slot, fixed fan module, Base software license, includes 1-year XIQ Pilot subscription |
| 5420F-24S-4XE | 5420F 24-port SFP Switch | 5420 Universal Switch with 24 x 100M/1Gb SFP ports, includes 4 x 1/10Gb SFP+ uplink ports, 2 x Stacking/SFP-DD ports, 1 internal fixed PSU, one unpopulated PSU slot, fixed fan module, Base software license, includes 1-year XIQ Pilot subscription |
| 5420F-48T-4XE | 5420F 48-port Switch | 5420 Universal Switch with 48 x 10/100/1000BASE-T full/half duplex ports, includes 4 x 1/10Gb SFP+ uplink ports, 2 x Stacking/SFP-DD ports, 1 internal fixed PSU, one unpopulated PSU slot, fixed fan module, Base software license, includes 1-year XIQ Pilot subscription |
| 5420F-48P-4XE | 5420F 48-port 30W PoE Switch | 5420 Universal Switch with 48 x 10/100/1000BASE-T full/half duplex 802.3at 30W PoE ports, includes 4 x 1/10Gb SFP+ uplink ports, 2 x Stacking/SFP-DD ports, 1 internal fixed PSU, one unpopulated PSU slot, fixed fan module, Base software license, includes 1-year XIQ Pilot subscription |
| 5420F-48P-4XL | 5420F 48-port 30W PoE Switch w/LRM | 5420 Universal Switch with 48 x 10/100/1000BASE-T full/half duplex 802.3at 30W PoE ports, includes 4 x 1/10Gb SFP+ LRM and uplink ports, 2 x Stacking/SFP-DD ports, 1 internal fixed PSU, one unpopulated PSU slot, fixed fan module, Base software license, includes 1-year XIQ Pilot subscription |
| 5420F-8W-16P-4XE | 5420F 24-port Switch w/8 ports 90W and 16 ports 30W PoE | 5420 Universal Switch with 8 x 10/100/1000BASE-T full/half duplex 802.3bt 90W PoE ports and 16 x 10/100/1000BASE-T full/half duplex 802.3at 30W PoE ports, includes 4 x 1/10Gb SFP+ uplink ports, 2 x Stacking/SFP-DD ports, 1 internal fixed PSU, one unpopulated PSU slot, fixed fan module, Base software license, includes 1-year XIQ Pilot subscription |
| 5420F-16W-32P-4XE | 5420F 48-port Switch w/16 ports 90W and 32 ports 30W PoE | 5420 Universal Switch with 16 x 10/100/1000BASE-T full/half duplex 802.3bt 90W PoE ports and 32 x 10/100/1000BASE-T full/half duplex 802.3at 30W PoE ports, includes 4 x 1/10Gb SFP+ uplink ports, 2 x Stacking/SFP-DD ports, 1 internal fixed PSU, one unpopulated PSU slot, fixed fan module, Base software license, includes 1-year XIQ Pilot subscription |
| 5420F-16MW-32P-4XE | 5420F 48-port Switch with 16 ports 90W multi-rate and 32 ports 30W PoE | 5420 Universal Switch with 16 x 100Mb/1Gb/2.5Gb 802.3bt 90W PoE ports plus 32 x 10/100/1000BASE-T full/half duplex 30W PoE ports, includes 4 x 1/10Gb SFP+ uplink ports, 2 x Stacking/SFP-DD ports, 1 internal fixed PSU, one unpopulated PSU slot, fixed fan module, Base software license, includes 1-year XIQ Pilot subscription |

Ordering Information (cont.)

| Part Number | Product Name | Description |
|--------------------|--|--|
| 5420M-24T-4YE | 5420M 24-port Switch | 5420 Universal Switch with 24 x 10/100/1000BASE-T full/half duplex ports, includes 4 x 1/10/25Gb SFP28 uplink ports, 2 x Stacking/SFP-DD ports, two unpopulated PSU slots, modular fan module, Base software license, includes 1-year XIQ Pilot subscription |
| 5420M-24W-4YE | 5420M 24-port 90W PoE Switch | 5420 Universal Switch with 24 x 10/100/1000BASE-T 802.3bt 90W PoE full/half duplex ports, includes 4 x 1/10/25Gb SFP28 uplink ports, 2 x Stacking/SFP-DD ports, two unpopulated PSU slots, modular fan module, Base software license, includes 1-year XIQ Pilot subscription |
| 5420M-48T-4YE | 5420M 48-port Switch | 5420 Universal Switch with 48 x 10/100/1000BASE-T full/half duplex ports, includes 4 x 1/10/25Gb SFP28 uplink ports, 2 x Stacking/SFP-DD ports, two unpopulated PSU slots, modular fan module, Base software license, includes 1-year XIQ Pilot subscription |
| 5420M-48W-4YE | 5420M 48-port 90W PoE Switch | 5420 Universal Switch with 48 x 10/100/1000BASE-T 802.3bt 90W PoE full/half duplex ports, includes 4 x 1/10/25Gb SFP28 uplink ports, 2 x Stacking/SFP-DD ports, two unpopulated PSU slots, modular fan module, Base software license, includes 1-year XIQ Pilot subscription |
| 5420M-16MW-32P-4YE | 5420M 48-port Switch with 16 ports 90W multi-rate and 32 ports PoE | 5420 Universal Switch with 16 x 100Mb/1Gb/2.5Gb 802.3bt 90W PoE ports plus 32 x 10/100/1000BASE-T full/half duplex 30W PoE ports, includes 4 x 1/10/25Gb SFP28 uplink ports, 2 x Stacking/SFP-DD ports, two unpopulated PSU slots, modular fan module, Base software license, includes 1-year XIQ Pilot subscription |
| Accessories | | |
| XN-ACPWR-150W | 150W AC PSU FB | 150W AC PSU supported on 5420 Series |
| XN-ACPWR-600W | 600W AC PSU FB | 600W AC PSU supported on 5420 Series |
| XN-ACPWR-920W | 920W AC PSU FB | 920W AC PSU supported on 5420 Series |
| XN-ACPWR-1200W | 1200W AC PSU FB | 1200W AC PSU supported on 5420 Series |
| XN-ACPWR-2000W | 2000W AC PSU FB | 2000W AC PSU supported on 5420 Series |
| XN-FAN-000 | Spare Fan Module | Spare Fan Module for 5420 Series |
| Software Licenses | | |
| 5000-PRMR-LIC-P | Premier License for 5000 Series | Perpetual Premier License for 5000 Series switches |
| 5000-MACSEC-LIC-P | MACsec License for 5000 Series | Perpetual MACsec license for 5000 Series switches |

Warranty

All 5420 Series models are covered under Extreme's Universal LLW policy. For warranty details, please visit: <http://www.extremenetworks.com/support/policies>.

Power Cords

In support of Extreme Networks Green initiatives, power cords are not included with the 5420, but can be ordered separately. They should be specified at time of ordering.

Optics/Transceivers

For a list of the optics/transceivers supported on the 5420 Series hardware, refer to our Extreme Optics Compatibility Tool at <https://optics.extremenetworks.com>.

Maintenance Services

Extreme's maintenance and support services with 100% in-sourced engineering experts and over 90% first-person resolution ensure efficient operation of your business-essential network. 24x7x365 phone support, advanced parts replacement, and on-site support augment your staff with experienced resources that help you mitigate critical network issues fast. Visit [Extreme Maintenance Services](#) for more information.



<http://www.extremenetworks.com/contact>

©2021 Extreme Networks, Inc. All rights reserved. Extreme Networks and the Extreme Networks logo are trademarks or registered trademarks of Extreme Networks, Inc. in the United States and/or other countries. All other names are the property of their respective owners. For additional information on Extreme Networks Trademarks please see <http://www.extremenetworks.com/company/legal/trademarks>. Specifications and product availability are subject to change without notice. 35802-0621-03