

## CASE STUDY

# Eclipse™ Quat Monitor Program Helps Protect Poultry Plant's Biological Waste System from Excess Quat

### Background

A customer had damaged the health of their biological wastewater system and it was determined that higher than recommended levels of quaternary ammonium was one of the contributing factors. The customer wanted to ensure they were protecting their biological system from the quats in the waste as they were working on restoring system functionality. The customer began by using a commercially available handheld quat test kit. This resulted in gross overfeeding of a quat-neutralizing product.

### Solution

ChemTreat offered our patented Eclipse™ quat monitoring and neutralization system as a solution. The Eclipse™ quat monitor can run tests as often as every 10 minutes to provide more frequent results than a handheld test. This can be important in high flow systems.

The Eclipse™ test is not effected by the same color and turbidity interferences seen with handheld tests in wastewater applications, and therefore provides more accurate results in waste systems. It can also control ChemTreat's quat-neutralizing chemical, QK1000, based on the measured amounts of quat.

### Results

Eclipse™ quat skid installation allowed ChemTreat to provide the customer with quick results. By switching to QK1000, they were able to use the monitor to improve their quat neutralization feed. Over time, the customer was able to compile trend data, reduce quat usage, and identify a baseline feed of quat neutralizer to feed further upstream in the process to help protect their freshly re-seeded anaerobic lagoons. The Eclipse™ quat monitor gave the customer more frequent and more accurate data regarding the amount of quaternary amines in their waste stream.

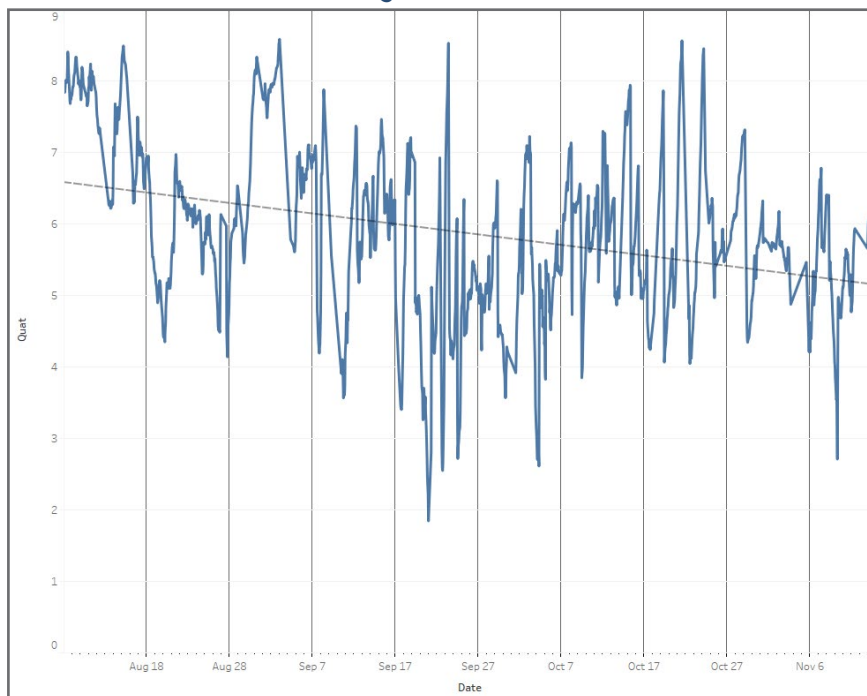
**With the help of the Eclipse™ quat monitoring and neutralization system, the customer saw the health of their waste plant return.**



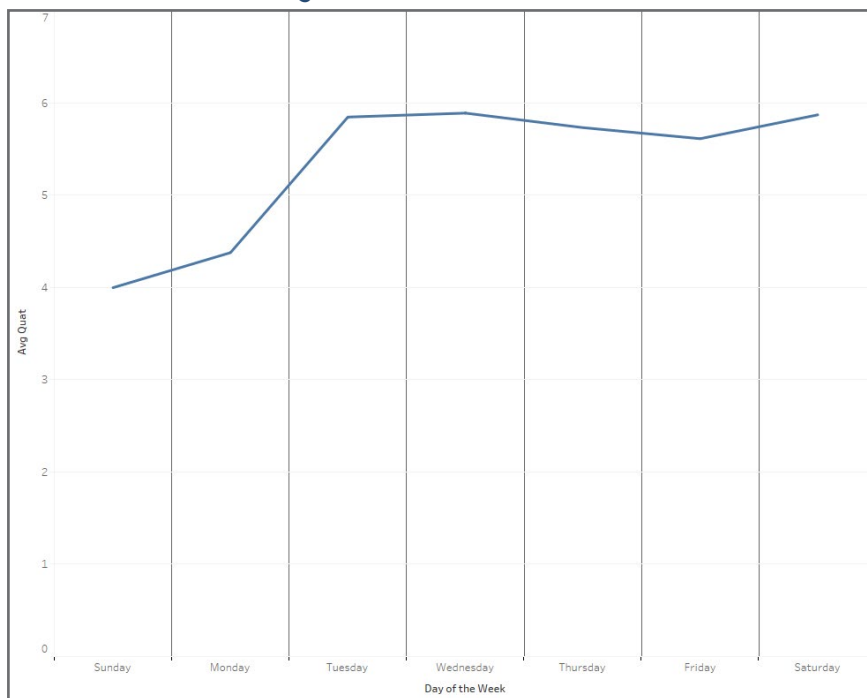
Results are examples only. They are not guaranteed. Actual results may vary.



**QUAT DATA**



**QUAT WEEKLY TRENDS**



Results are examples only. They are not guaranteed. Actual results may vary.