

## Highlights

### SD-WAN Optimization

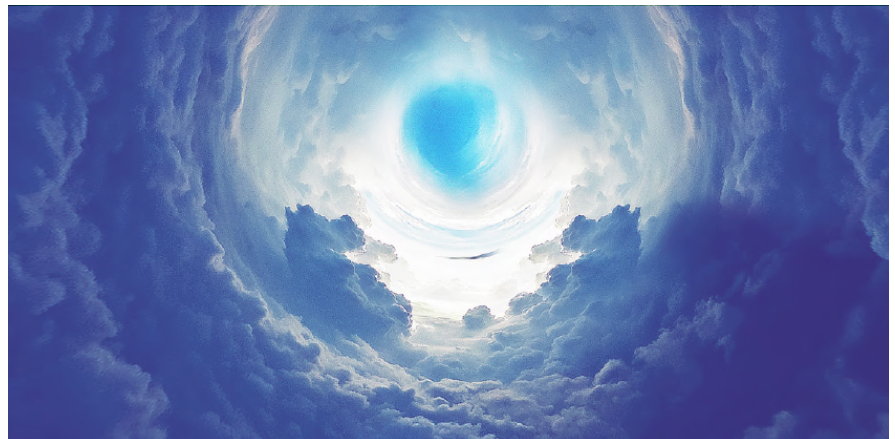
- User and application flow control
- Link state monitoring
- Multi-path optimization

### Management and Analytics with ExtremeCloud™ IQ

- Simplified network operations
- Link state visibility monitoring
- Advanced reporting and network insights

### Secure network access

- Layer 2-7 policy enforcement
- Identify, prioritize, and restrict traffic flows



## VPN Gateway Virtual Appliance

### VMware-based VPN Tunnel Termination

The VPN Gateway Virtual Appliance (VGVA) is designed to simplify VPN and GRE termination, and is a key component of Extreme's SD-WAN branch solution. As a software-based VMware-compliant solution, the VGVA provides scalable enterprise-class VPN termination for thousands of layer 2/3 VPN tunnels from remote access locations.

Underpinned by ExtremeCloud™ IQ management and software-defined device intelligence, highly distributed organizations benefit from simplified provisioning, increased network resilience, end-to-end visibility and control, and reduced cost and complexity.

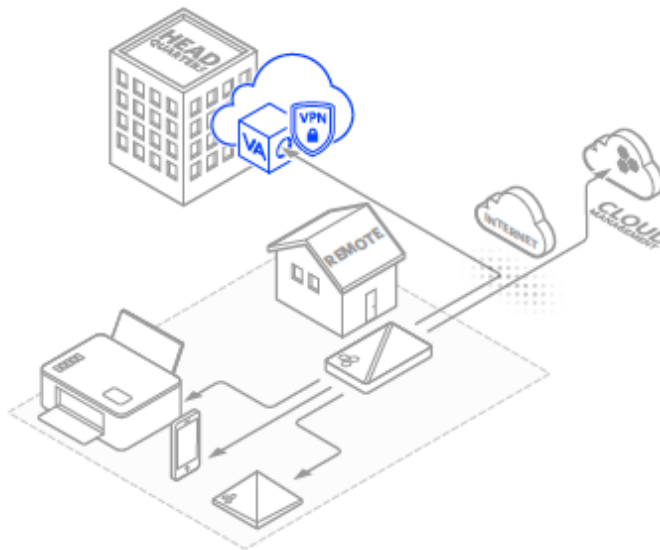


### Built to Suit Your Business Needs

**Extreme Elements** are the building blocks that allow you to tailor your network to your specific business environment, goals, and objectives. They enable the creation of an Autonomous Network that delivers the positive experiences and business outcomes most important to your organization.

Combining architecture, automation, and artificial intelligence, Extreme Elements enable you to ensure that your users get what they need — when and where they need it. Providing these superior user experiences is as simple as mixing and matching the right elements.

Learn more at [www.extremenetworks.com/extreme-elements/](http://www.extremenetworks.com/extreme-elements/).



## VGVA Features

### Performance

- Multi-path optimization and link state detection
- Granular user profile-based QoS policies for each user and device
- Application-aware traffic shaping and performance optimization
- Per packet decision making

### Security

- Identity-based access control plus application visibility for 1200+ applications
- Wired endpoint authentication for 802.1X, MAC authentication, and Captive Web Portal support
- Layer 2-7 stateful firewall

### Management

- Public and Private Cloud, and on-premises management with intuitive configuration and comprehensive reporting
- Full stack solution when combined with Extreme's unified switches and wireless APs
- Simplified rollout - zero-touch provisioning & dynamic router IP address space management
- WAN and VPN monitoring via HiveManager, SNMP v1, v2c, and syslog

### VGVA Recommended Hardware Specifications

	500 Tunnels	1000 Tunnels
CPU	2.4GHz dual-core	3.1GHz quad-core
Memory	2+ GB (512MB for VM)	4+ GB (1024MB for VM)
Ethernet NICs	1 or 2	2
VMware Version	ESXi 4.1 or later	
Hard Disk Size	10+ GB (256MB for VM)	

## Product Specifications

### SD-WAN Routing Features

- Link state monitoring
- Per packet dynamic WAN path selection
- User and application aware routing policies

### Layer 3 IPsec VPN (When combined with Extreme router(s))

- Remote office IPsec-based VPN solution
- Profile-based split tunneling with NAT support
- Extend local subnet or create unique subnets per remote site
- Redundant tunnel support

### Layer 2 IPsec VPN (When combined with Extreme AP(s))

- Remote AP IPsec-based VPN solution
- Extend local subnet to remote sites
- Redundant tunnel support

### Routing Protocols

- OSPF
- RIPv2

Note: a single VGVA can function in either L2 or L3 mode (not both).

### VGVA Recommended Hardware Specifications

SKU	Descriptions
AH-VG-VA	VG-VA, VPN Gateway Virtual Appliance