

## Highlights

### Centralized Management

- Real time insights
- Access Control
- Multi-vendor support

### Visibility of all Devices

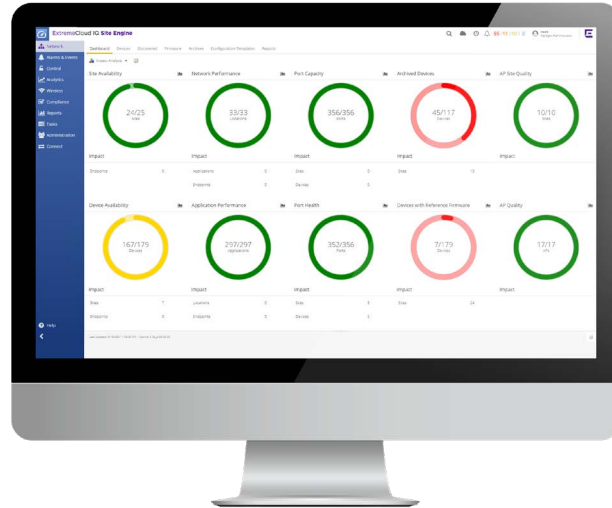
- Cloud native
- Non-cloud native
- Third party

### Flexible Management

- Public/Private Cloud
- On-premises

### Applications

- Network Management
- ExtremeAnalytics™
- ExtremeControl™
- ExtremeConnect™



## ExtremeCloud™ IQ – Site Engine

### Expanding ExtremeCloud IQ to support All Devices in the Cloud or On-Premises

ExtremeCloud IQ – Site Engine extends Extreme’s flagship cloud management solution to third party devices and non-cloud native devices, to deliver end-to-end network management, automation, insights, and assurance. The dashboard provides one centralized view of your entire network with visibility of all network devices — cloud native, non-cloud native and third-party devices. Additionally, ExtremeCloud IQ – Site Engine provides the flexibility to manage your network in the cloud or on-premises.

ExtremeCloud IQ – Site Engine provides task automation, access control, granular visibility with real-time analytics, as well as multi-vendor device management.

Delivered as Software as a Service, you benefit from decreased overall cost of ownership, reduced time-to-benefit, and unique scalability. While you gain most benefits using ExtremeCloud IQ – Site Engine together with ExtremeCloud IQ, it can also be used in air-gapped mode.



## Network Management

It offers a single pane of glass for your wired and wireless network - edge to data center - and across devices of different vendors. Zero touch provisioning (ZTP+) lets you quickly bring new infrastructure online. A granular view of users, devices and applications with an easy-to-understand dashboard lets you manage inventory and network topology efficiently. Policies and new services such as BYOD can be enabled through the integrated graphical user interface and enforced at the network point of entry through ExtremeControl for ExtremeCloud IQ - Site Engine. To enhance managing 3rd party devices, our dashboard shows their topology and discovery. We help decrease your time to service with powerful fabric provisioning built right in. To free up IT time and avoid human error we are offering cross domain workflow automation.

---



## Ecosystem Integration

ExtremeCloud IQ - Site Engine is integrated with key enterprise platforms to streamline your business processes, enable more robust data analysis and deliver seamless user experiences. ExtremeConnect offers integration with major enterprise platforms for network security, mobile management, analytics, cloud and data center solutions. In addition, we offer a comprehensive suite of open APIs from our network infrastructure portfolio of switches and wireless APs. This includes the classic integration methods like SNMP, Syslog and more efficient integration methods like REST-based APIs (currently under development).



## Analytics

Get actionable business insights from your end-to-end network with granular details into the performance of applications and the network through application telemetry and deep packet inspection (DPI). ExtremeAnalytics for ExtremeCloud IQ - Site Engine speeds up troubleshooting by separating network from application performance so you can quickly identify root-causes. It monitors shadow IT, identifies and reports malicious or unwanted applications, and helps with security compliance. ExtremeAnalytics Analytics Engine extends application visibility from physical to virtual environments. It eliminates virtualization blind spots with visibility and application performance measurements between VMs on the same host or across hosts on a VMWare virtualized data center. With deep packet inspection, you can see and analyze network-traffic across multiple layers for real-time accurate information analysis. Additionally, integration with AWS, MS Azure and GCP provides a unique capability of a single analytics toolset that covers campus, data center and cloud instances. Learn more about ExtremeAnalytics for ExtremeCloud IQ - Site Engine.

---



## Security

Unify the security of your wired and wireless networks with in-depth visibility and control over users, devices and applications. ExtremeControl for ExtremeCloud IQ - Site Engine delivers granular policy controls that enable you to comply to policies and compliance obligations including heterogeneous endpoint environments. Locate, authenticate and apply targeted policies to users and devices as they can easily onboard to the network for secure BYOD, guest access and IoT, all through a single integrated user interface. Learn more about ExtremeControl for ExtremeCloud IQ - Site Engine.

## Specifications

### Virtual Appliance Options

The ExtremeCloud IQ – Site Engine virtual appliances must be deployed on a VMWare or Hyper-V server with a disk format of VHDX.

- The VMWare Site Engine virtual engines are packaged in the .OVA file format (defined by VMware).
- The Hyper-V Site Engine virtual engines are packaged in the .ZIP file format

Refer to the Release Notes for information on Virtual Appliance scalability

### Deployment options for ExtremeCloud IQ – Site Engines

- Red Hat Enterprise Linux WS and ES v6 and v7
- Ubuntu 18.04 (64-bit only)
- VMware®(64-bit Virtual Appliance) VMware ESXi versions 6.0, 6.5, 6.7 server
- Hyper-V (64-bit Virtual Appliance) Hyper-V Server 2012 R2, Hyper-V Server 2016

### Deployment options for ExtremeControl for ExtremeCloud IQ – Site Engines and ExtremeAnalytics for ExtremeCloud IQ – Site Engines

- VMware®(64-bit Virtual Appliance) VMware ESXi versions 6.0, 6.5, 6.7 server
- Hyper-V (64-bit Virtual Appliance) Hyper-V Server 2012 R2, Hyper-V Server 2016

### Supported Web Browsers

- Microsoft Edge
- Mozilla Firefox 34 and later
- Google Chrome 33.0 and later

### Services and Support

Extreme Networks provides comprehensive service offerings that can help you maintain, design, deploy, and optimize your network. We offer customized technical training and service and support tailored to your specific needs. Please contact your Extreme Networks account executive for more information about Extreme Networks Services and Support.

## Ordering Information

Category	Model Number	Model Description
ExtremeCloud IQ Pilot Subscription	XIQ-PIL-S-C-EW	ExtremeCloud IQ Pilot SaaS Subscription and EW SaaS Support for one (1) device (1 year).
ExtremeCloud IQ Pilot Subscription	XIQ-PIL-S-C-PWP	ExtremeCloud IQ Pilot SaaS Subscription and PWP SaaS Support for one (1) device (1 year).
ExtremeCloud IQ Navigator Subscription	XIQ-NAV-S-C-EW	ExtremeCloud IQ Navigator SaaS Subscription EW SaaS Support for one (1) device (1 year).
ExtremeCloud IQ Navigator Subscription	XIQ-NAV-S-C-PWP	ExtremeCloud IQ Navigator SaaS Subscription PWP SaaS Support for one (1) device (1 year).

Every ExtremeCloud IQ customer can use ExtremeCloud IQ – Site Engine at no additional cost. Refer to the [ExtremeCloud IQ datasheet](#) for additional info on ExtremeCloud IQ.



<http://www.extremenetworks.com/contact>

©2021 Extreme Networks, Inc. All rights reserved. Extreme Networks and the Extreme Networks logo are trademarks or registered trademarks of Extreme Networks, Inc. in the United States and/or other countries. All other names are the property of their respective owners. For additional information on Extreme Networks Trademarks please see <http://www.extremenetworks.com/company/legal/trademarks>. Specifications and product availability are subject to change without notice. 37825-0421-19