

## Highlights

### Education Alignment

- Transform complex network data into education-centric, actionable information
- Centralize and simplify the definition, management, and enforcement of policies such as guest access or personal devices

### Deliver a Superior User Experience

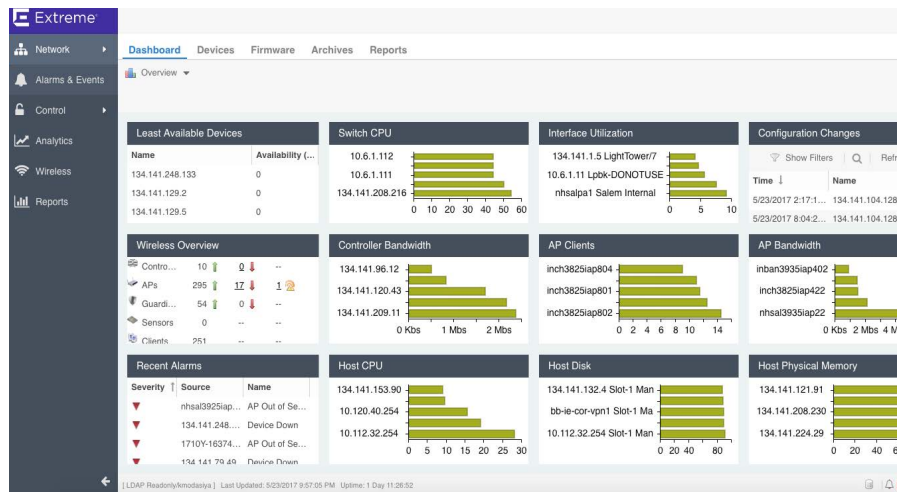
- Mitigate performance issues quickly with data-driven insights into network and application performance across your wired and wireless network
- Track user adoption and usage of applications to make the right business decisions

### Increase Operational Efficiency

- Manage entire network securely and efficiently from a single pane of glass
- Increase time-to-value with Zero Touch Provisioning + (ZTP+)
- Optimize workflows with flexible groupings and filtering for reporting and large scale editing
- Reduce IT administrative effort with the automation of routine tasks and web-based dashboard

### Keep Your Network Secure

- Make real-time decisions based on actionable data from the network
- Easily enforce policies across the entire infrastructure for QoS and bandwidth
- Reduce the risk of implementing new technologies such as BYOD and IoT with fully automated policy setting and testing



# Extreme Management Center for K-12 End-to-End Application Visibility and Control

Your organization is changing fast, so is your network. You need to implement new technologies to drive new business outcomes while limiting operational expenses. Imagine an IT team that focuses on innovative and revenue generating activities such as new IoT implementations and still keeps the network safe. Delivers superior application experiences to staff, partners and customers.

Extreme Management Center was designed, so your network can support your educational institution's objectives.

It empowers you to deliver a superior quality of experience to your end-users through a single pane of glass. It works across your wired and wireless network, from the edge to the private cloud.

Extreme Management Center enables the network infrastructure to be viewed as a unified whole rather than as a collection of disparate individual components. It transforms complex network data into graphical, usage-centric information making the network less complicated and better aligned with Education requirements.

Extreme Management Center is designed to give you granular insights, visibility and automated control over users, devices and applications. Distinguish network from application performance and correlate with user and device activities to troubleshoot issues fast. Actionable insights from the network let you make real-time decisions on policies, devices, applications and people. This way, the implementation of new technologies such as IoT can be automated and securely executed. Extreme Management is delivered as hardware appliance or virtual appliance.

Professional Services can help you design, deploy and optimize your network, and provide customized technical training and support tailored to your specific needs.

## Extreme Management Center

### A Single Pane of Glass For Your Wired and Wireless Network - From Datacenter to Edge

Extreme Management Center offers you all you need to get data-driven insights, visibility and control into your wired and wireless network. It comprises the following product components that are all tightly integrated into one single pane of glass.

## ExtremeControl

### Security Through Visibility and Control

Unify the security of your wired and wireless networks with in-depth visibility and control over users, devices and applications. ExtremeControl delivers granular policy controls that enable you to comply to policies and compliance obligations including heterogeneous endpoint environments. Locate, authenticate and apply targeted policies to users and devices as they connect to the network for secure BYOD, guest access and IoT, all through a single integrated user interface. Applying role-based policy makes it far easier to align the network infrastructure with the educational needs and control guest users. enforce regulatory mandates, and enforce acceptable use rules.

Get more information on [ExtremeControl](#).

## ExtremeAnalytics

### Insights into Network and Application Performance

Get actionable business insights from your end-to-end network with our ExtremeAnalytics. Our solution speeds up troubleshooting by separating network from application performance so you can quickly identify root-causes. It monitors shadow IT, identifies and reports malicious or unwanted applications, and assesses security compliance.

Get more information on [ExtremeAnalytics](#).

## ExtremeManagement

### Unified View of Users, Devices and Applications

ExtremeManagement offers a single pane of glass for your wired and wireless network – datacenter to edge. Zero-touch provisioning lets you quickly bring new infrastructure online. Together with ExtremeControl, it lets you unify the security of your wired and wireless networks with in-depth visibility and control. A granular view of users, devices and applications with an easy to understand dashboard lets you manage inventory and network topology efficiently. Policies and new services such as BYOD can be enabled through the integrated interface of ExtremeManagement and enforced at the network point of entry through ExtremeControl.

Get more information on [ExtremeManagement](#).

## ExtremeConnect

### Ecosystem Integration Platform

Extreme Management Center is integrated with key enterprise platforms to streamline your business processes, enable more robust data analysis and deliver seamless user experiences. ExtremeConnect offers integration with major enterprise platforms for network security, mobile management, analytics, cloud and datacenter solutions. In addition, we offer an open API for customized integrations. With ExtremeConnect, educational appliances can be directly controlled from Extreme Management Center.

See a list of our [Extreme Technology Partners](#).

## Information Governance Engine

Reduce risk and ensure your network configurations comply to HIPAA and PCI with our fully automated Information Governance Engine that analyses and assesses network configurations for compliance across your entire wired and wireless network.

# Appliance Options

## Hardware Appliance

Our NS-A-20 hardware appliance is a rack-mountable server with all capabilities pre-installed. Purchased applications (licensed separately) are activated via license keys.

## Virtual Appliance Options

The Extreme Management Center virtual appliances must be deployed on a VMWare or Hyper-V server with a disk format of VHDX.

- The VMWare Management Center virtual engines are packaged in the .OVA file format (defined by VMware).
- The Hyper-V Management Center virtual engines are packaged in the .ZIP file format.

*Note: For ExtremeControl and ExtremeAnalytics Hardware and Virtual Appliance requirements, please refer to respective data sheets.*

# System Requirements

## Management Center Server and OS Requirements

These are the operating system requirements for the Management Center Server.

**Windows 64-bit** (qualified on the English version of the operating systems)

Windows Server® 2008 Enterprise (64-bit only) and 2008 R2

Windows Server® 2012 Enterprise (64-bit only) and 2012 R2  
Windows® 8 and 8.1 (64-bit only)

### Linux 64-bit

Red Hat Enterprise Linux WS and ES v5 and v6 (64-bit only)  
SuSE Linux versions 10, 11, and 12.3 (64-bit only)  
Ubuntu 11.10, 12.04, and 13.04 (64-bit only)

**VMware®** (64-bit Management Center Virtual Appliance)  
VMware ESXi™ 5.1, 5.5, or 6.0 server

**Hyper-V** (64-bit Management Center Virtual Appliance)

Hyper-V virtual appliances are supported on  
Windows Server  
2012 R2 running Hyper-V Server 2012 Supported  
Web Browsers  
Microsoft Edge and Internet Explorer version 11  
Mozilla Firefox 34 and later  
Google Chrome 33.0 and later

## Management Center Appliance

The NS-A-20 Management Center Appliance includes (2) XEON E5-2620 CPUs (24 cores), dual 1 TB hard drives with RAID controller, 24 GB RAM, and dual power supplies.

**Physical Specifications**  
Height: 1.75" (4.45 cm) - 1U  
Length: 27.95" (70.9 cm)  
Width 16.93" (43 cm)  
Weight 31.8 lbs (14.4 kg)

## Power

Wattage: 750 Watt (max), each power supply  
Voltage: 110/240 VAC;  
Frequency 47- 63Hz

## Environmental Specifications

Operating Temperature: 10° to 35°C (50° to 95°F)  
Storage Temperature: -40° to 70°C (-40° to 158°F)  
Operating Humidity: 5% to 90% (noncondensing)

## Standards Compliance

Regulatory/Safety:  
UL60950 - CSA 60950(USA/Canada)  
EN60950 (Europe)  
IEC60950 (International)  
CB Certificate & Report, IEC60950  
GS Certification (Germany)  
OST R 50377-92 - Certification (Russia)  
Ukraine Certification (Ukraine)  
CE - Low Voltage Directive  
2006/95/EC (Europe)  
IRAM Certification (Argentina)

## Emissions/Immunity

FCC/ICES-003 - Emissions (USA/Canada)  
CISPR 22 - Emissions (International)  
EN55022 - Emissions (Europe)  
EN55024 - Immunity (Europe)  
EN61000-3-2 - Harmonics (Europe)  
EN61000-3-3 - Voltage Flicker (Europe)  
CE - EMC Directive 2004/108 EC (Europe)  
VCCI Emissions (Japan)  
AS/NZS 3548 Emissions (Australia/New Zealand)  
BSMI CNS13438 Emissions (Taiwan)  
GOST R 29216-91 Emissions (Russia)  
GOST R 50628-95 Immunity (Russia)  
Ukraine Certification (Ukraine)  
KC Certification (Korea)

## Ordering Information

Extreme Management Center provides a cost-efficient way for schools to address their priorities, optimize their budget use and demonstrate time-to-value

### Per-User Subscription Pricing for ExtremeControl and ExtremeAnalytics

#### ExtremeControl (97207-27001)

Includes unlimited number of end-system licenses up to performance limit and ExtremeWorks for these licenses, priced per user per year.

#### ExtremeAnalytics (97208-27001)

Includes unlimited number of end-system and flows per minute licenses up to performance limit and ExtremeWorks for these licenses, priced per user per year.

### Per-Device Pricing for Extreme Management Center

#### NMS-K12

Includes basic wired and wireless management features as well as inventory management, policy management, access control management, and the full featured interface. In addition, Management Center Advanced includes advanced wireless management, with triangulated location, location tracking, wireless coverage maps and other advanced mapping functionality, the Connect API, ability to install on a primary server, redundant server and lab server, a 500 end-system license for Access Control, and virtual Access Control appliances for full Access Control deployment flexibility (require end-system licenses if needed in addition to the 500 included), 3000 flows per Minute Application Analytics license and Application Analytics virtual engines, 100 remote clients are included.

## Warranty

As a customer-centric company, Extreme Networks is committed to providing quality products and solutions. In the event that one of our products fails due to a defect, we have developed a comprehensive warranty that protects you and provides a simple way to get your product repaired or media replaced as soon as possible.

The Management Center appliance comes with a one year warranty against manufacturing defects. Software warranties are ninety (90) days and cover defects in media only.

For full warranty terms and conditions please go to: <http://www.extremenetworks.com/support/policies>

## Service and Support

Extreme Networks provides comprehensive service offerings that range from Professional Services to design, deploy and optimize customer networks, customized technical training, to service and support tailored to individual customer needs. Please contact your Extreme Networks account executive for more information about Extreme Networks Service and Support.

## Additional Information

For additional technical information on Management Center, please go to: <http://www.extremenetworks.com/product/management-center>



<http://www.extremenetworks.com/contact> / Phone +1-408-579-2800

©2017 Extreme Networks, Inc. All rights reserved. Extreme Networks and the Extreme Networks logo are trademarks or registered trademarks of Extreme Networks, Inc. in the United States and/or other countries. All other names are the property of their respective owners. For additional information on Extreme Networks Trademarks please see <http://www.extremenetworks.com/company/legal/trademarks>. Specifications and product availability are subject to change without notice. 12071-0617-19