

Highlights

Access Security

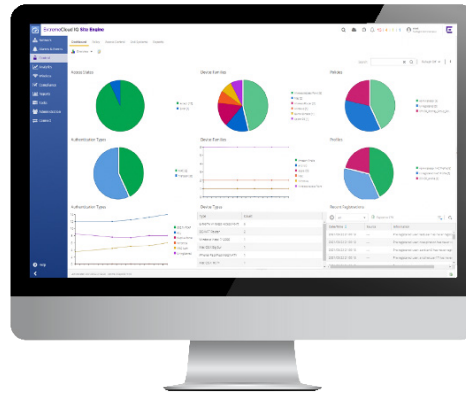
- Role-based network access control for all devices including third party
- Secure guest access and BYOD onboarding
- Integration with third party solutions such as NGFW, SIEM, CMDB, internet security and EMM/MDM
- Secure IoT network access

Operational Efficiency

- Automatic performance alerting
- Single pane of glass for management, policies, access control and application analytics
- Accelerate troubleshooting by separating network from application issues

Business Aligned

- Let your business imperatives drive the network with context driven, consistent policies from edge to data center
- Protect corporate data by proactively preventing unauthorized users and compromised endpoints from network access
- Securely enable critical initiatives like BYOD and IoT
- Effectively balance security and availability for users, contractors and guests



ExtremeControl™ for ExtremeCloud™ IQ – Site Engine

Keep your network edge secure with end-point security.

ExtremeControl is an application available as part of ExtremeCloud IQ Site Engine. ExtremeCloud IQ-Site Engine extends Extreme's flagship cloud management solution to third party devices and non-cloud native devices and provides the flexibility to manage your network in the cloud or on-premises.

With most data breaches starting at end-points, you need granular control over users and IoT devices and consistent policies across the entire network into multicloud. Our access control solution gives you centralized in-depth visibility and control over all end-points across your network through one simple, flexible and easy to consume dashboard.

ExtremeControl securely enables BYOD and IoT to protect your network against external threats. It lets you centrally manage and define granular policies so you can meet compliance obligations, locate, authenticate and apply targeted policies to users and devices.

ExtremeControl is integrated with major enterprise platforms including solutions for network security, enterprise mobility management, analytics, cloud and data center. In addition, it offers an open northbound API for customized integrations to key enterprise platforms.



Granular Policy Control

ExtremeControl enables you to apply granular controls over who, what, when, where, and how endpoints are allowed on the network. You can enable secure BYOD, guest access and IoT by rolling out real-time policies based on the security posture of devices. ExtremeControl matches endpoints with attributes, such as user, time, location, vulnerability, or access type, to create an all-encompassing contextual identity. Role based identities follow a user, no matter from where or how she connects to the network. They can be used to enforce highly secure access policies.



Advanced Reporting

ExtremeControl makes it easy to monitor issues on your network - all on one simple-to-read dashboard. It sends you advanced, customizable reports and alerts about the authentication, guest access, onboarding, device profiles and authentication, as well as end-system health. When rolling out large projects, reduce risk by testing new policies and using passive policies for what-if-scenarios prior to enforcement. ExtremeControl lets you identify threats by profiling and tracking users and devices, as well as monitoring the health and compliance of devices before and after access. It assesses your network with policy audits and hit reports.



Posture Assessment

Reduce security vulnerabilities with end-system posture assessment. ExtremeControl offers an agentless assessment option. The agentless assessment does not require an installation or running of any software on the end system. Additionally, agentless security posture assessments with the ability to integrate external solutions like scanners and endpoint security solutions are available.



Ecosystem Integration

ExtremeControl is integrated with our ecosystem of partners to expand network security and threat response. For example, ExtremeControl is integrated with next-generation firewall solutions and can orchestrate endpoint isolation and remediation based on the alerts received. We share contextual information such as users, IP address and location for powerful policy enforcement at perimeter firewalls. Policies based on ID-IP mapping follow users. ExtremeControl also offers third party policy support, via user-based ACLs, ensuring granular control of your entire network. To prevent access of your network from non-compliant and un-enrolled devices we make integration with our EMM/MDM partners, such as Airwatch, Citrix and MobileIron and others easy.

Specifications

Virtual Appliance Options

The ExtremeControl for ExtremeCloud IQ - Site Engine can also be installed as a virtual appliance that customers can download at purchase. The ExtremeControl, virtual engines must be deployed on a VMWare or Hyper-V server with a disk form

- The VMWare Management Center virtual engines are packaged in the.OVA file format (defined by VMware)
- The Hyper-V Management Center virtual engines are packaged in the .ZIP file format

ExtremeControl Supported End-System Browsers

The following table outlines the supported desktop and mobile end-system browsers connecting to the network through the Mobile Captive Portal of ExtremeControl.

Browser		Version
Desktop	Microsoft Edge Microsoft Internet Explorer Mozilla Firefox Google Chrome Safari	41 and later 11 and later 34 and later 33.0 and later All Versions
Mobile	Internet Explorer Mobile Microsoft Edge Microsoft Windows 10 Touch Screen Native (Surface Table) Safari iOS Native Android Chrome Android Native Dolhin Opera	11 and later (Windows Phone) All Versions N/A 7 and later 9 and later 4.0 and later All Versions All Versions

Ordering Information

Part Number	Part Number
NAC Subscription Enterprise Licenses	
XIQ-NAC-S-1K-EW	ExtremeCloud IQ NAC SaaS Subscription and EW SaaS Support for 1K end-systems (1 year)
XIQ-NAC-S-10K-EW	ExtremeCloud IQ NAC SaaS Subscription and EW SaaS Support for 10K end-systems (1 year)
XIQ-NAC-S-100K-EW	ExtremeCloud IQ NAC SaaS Subscription and EW SaaS Support for 100K end-systems (1 year)
XIQ-NAC-S-1K-PWP	ExtremeCloud IQ NAC SaaS Subscription and PWP SaaS Support for 1K end-systems (1 year)
XIQ-NAC-S-10K-PWP	ExtremeCloud IQ NAC SaaS Subscription and PWP SaaS Support for 10K end-systems (1 year)
XIQ-NAC-S-100K-PWP	ExtremeCloud IQ NAC SaaS Subscription and PWP SaaS Support for 100K end-systems (1 year)
Optional Sec Posture Assessment Licenses	
IA-PA-3K	Optional Sec Posture Assessment for 3K end-systems
IA-PA-12K	Optional Sec Posture Assessment for 12K end-systems

Service and Support

Extreme Networks provides comprehensive service offerings that range from Professional Services to design, deploy and optimize customer networks, customized technical training, to service and support tailored to individual customer needs. Please contact your Extreme Networks account executive for more information about Extreme Networks Service and Support.



<http://www.extremenetworks.com/contact>

©2021 Extreme Networks, Inc. All rights reserved. Extreme Networks and the Extreme Networks logo are trademarks or registered trademarks of Extreme Networks, Inc. in the United States and/or other countries. All other names are the property of their respective owners. For additional information on Extreme Networks Trademarks please see <http://www.extremenetworks.com/company/legal/trademarks>. Specifications and product availability are subject to change without notice. 37826-0421-19